



SQL Server Express  
Installation Guidelines  
(for WinSPC)



29200 Northwestern Hwy • Suite 350  
Southfield, MI 48034 USA

1-866-4WINSPC • [winspc.com](http://winspc.com)

© 2018 DataNet Quality Systems. All rights reserved.  
WinSPC is a registered trademark of DataNet Quality Systems.

Document Version: 9.0.8.A

---

## Table of Contents

ABOUT THIS DOCUMENT .....	4
DOWNLOAD THE INSTALLATION FILES .....	5
BEGIN THE INSTALL OF SQL SERVER EXPRESS.....	6
COMPLETE THE INSTALL OF SQL SERVER EXPRESS .....	9
INSTALL SQL SERVER MANAGEMENT STUDIO .....	15

## ABOUT THIS DOCUMENT

This document provides guidelines for installing a Microsoft **SQL Server Express** database to be used in a WinSPC implementation. Once installed, that database must be configured by completing **Chapter 1: Microsoft SQL Server** in the **WinSPC Installation and Configuration Guide** (which is included in the materials that ship with WinSPC).

WinSPC works with all the editions of **SQL Server Express** that are currently available from Microsoft. These guidelines apply to each of those editions. If a discrepancy between these guidelines and documentation from Microsoft is encountered, please follow Microsoft's documentation.

This document contains screenshots from an installation of **SQL Server 2017 Express** on **Windows Server 2016**. These may differ from what you see during your installation depending on the edition you install and the operating system on which you install it. The differences will be minor and are not expected to introduce difficulty.

If you have any questions about any information in this document, please contact WinSPC Support at (248) 447-0140 or [support@winspc.com](mailto:support@winspc.com).

A rectangular button with a light gray background and a thin black border. The word "Download" is centered on the button in a bold, black, sans-serif font.

## DOWNLOAD THE INSTALLATION FILES

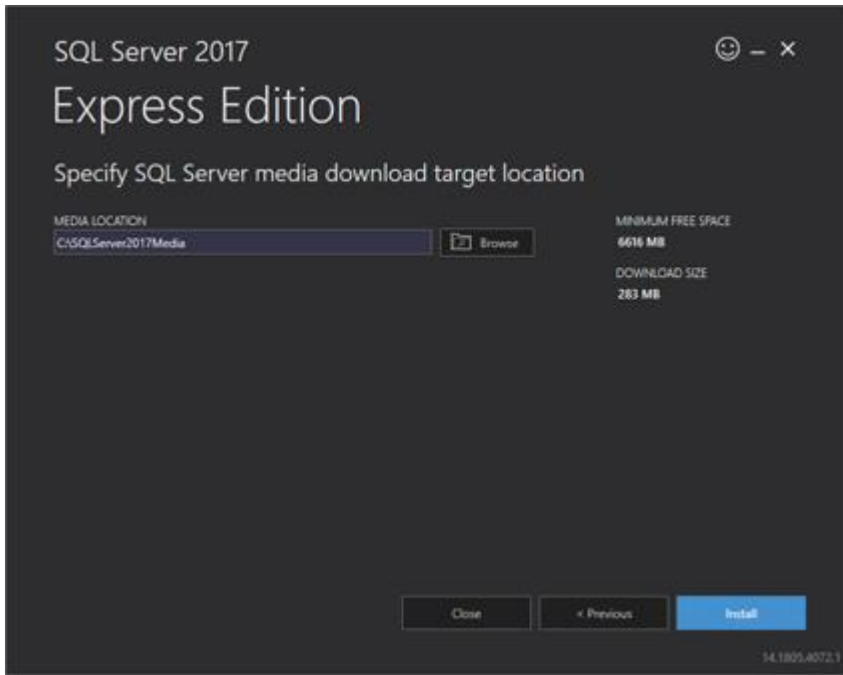
1. Download an edition of **SQL Server Express** that has system requirements that are met by the computer on which the **SQL Server Express** database is to be installed. Links to edition-specific pages on Microsoft's website are given below. Except for the first link's page, each page contains the edition's system requirements and a **Download** button. The first link's page, the one for **SQL Server 2017 Express** (among other content), doesn't detail system requirements; however, the system requirements for **SQL Server 2017 Express** are expected to be identical to those for **SQL Server 2016 Service Pack 2 Express**, the second link. For each the last three editions, there are different installation files you can download. A list of these files is displayed when you click the page's **Download** button. For these last three options, if the computer on which you will the install the database is a 64-bit computer, download either the file named **SQLEXPRTW\_x64\_ENU.exe** or **SQLEXPRTADV\_x64\_ENU.exe** or, if the computer is a 32-bit computer, download either **SQLEXPRTW\_x86\_ENU.exe** or **SQLEXPRTADV\_x86\_ENU.exe**. The reason for this is that these files include **SQL Server Management Studio** and this studio is required.
  - [SQL Server 2017 Express](#) (recommended)
  - [SQL Server 2016 Service Pack 2 Express](#)
  - [SQL Server 2014 Service Pack 2 \(SP2\) Express](#)
  - [SQL Server 2012 Express](#)
  - [SQL Server 2008 R2 SPC – Express Edition](#)
2. If you downloaded one of the first two editions listed above, download the installation file for the latest version of **SQL Server Management Studio** to the same computer. To do this, go to the [Download SQL Server Management Studio \(SMSS\)](#) page and click that page's **Download SQL Server Management Studio 18.0 (preview 4)** link.
3. If you downloaded one of the last three editions listed above, complete step 1 of Microsoft's **Install Instructions** for that edition, which are found on the same page as the system requirements. That step details the edition's particular **.net Framework** needs.

**Begin the  
Install****BEGIN THE INSTALL OF SQL SERVER EXPRESS**

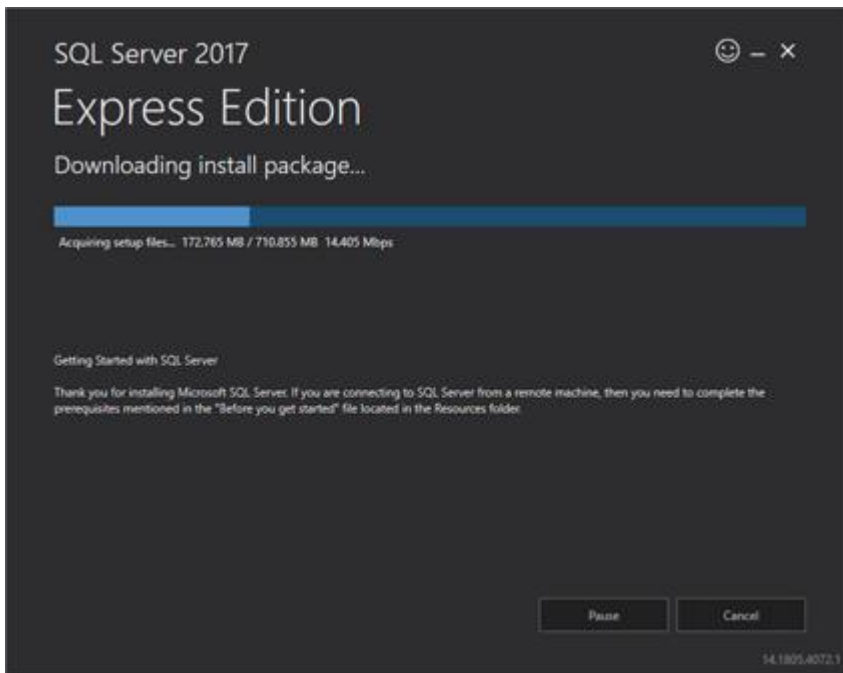
1. Complete this step if, in [step 1](#) of the previous *Download the Installation Files* section, you downloaded the installation file for *SQL Server 2017 Express* or *SQL Server 2016 Service Pack 2 Express*:
  - a. Double-click the installation file and, in the window that appears, click **Custom**.



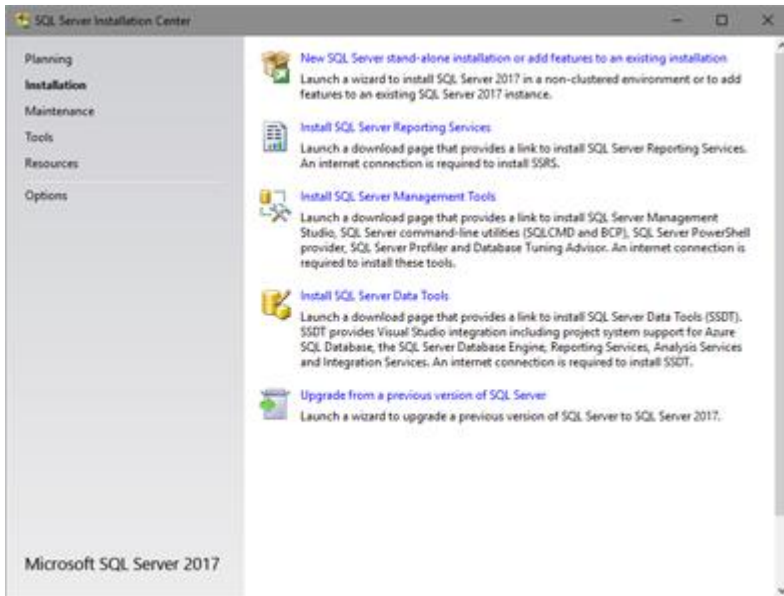
- b. In the next window, specify a folder for the media (the **SQL Server Express** installation package) to be downloaded to and click **Install**.



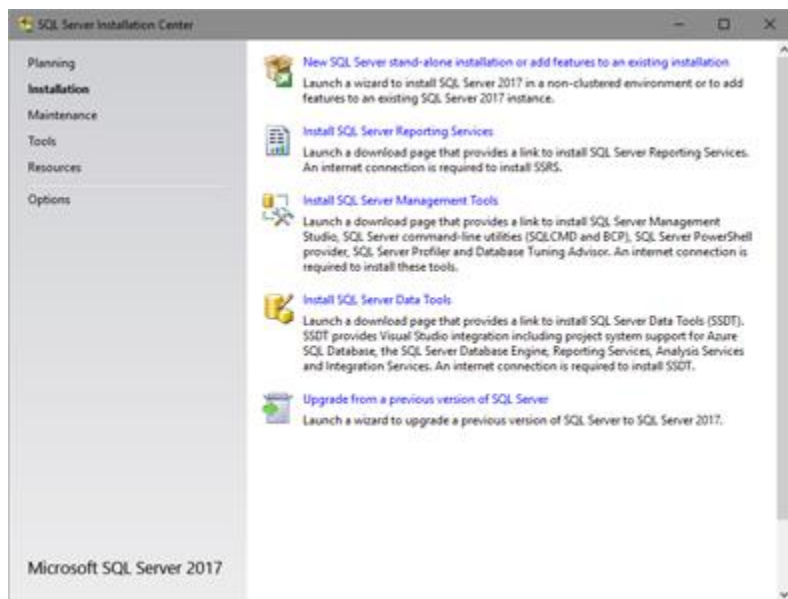
- c. Allow the install package to download. (This may take several minutes.)



- d. When the **SQL Server Installation Center** window appears, go to the [Complete the Install of SQL Server Express](#) section of this document.



2. Complete this step if, in [step 1](#) of the previous **Download the Installation Files** section, you downloaded the installation file for one of the last three editions listed:
- Double-click the installation file.
  - If you are prompted to choose a directory for extracted files, do so, click **Ok**, and allow the extraction to complete. Then, from the directory you specified, launch the **Setup.exe** file.
  - When the **SQL Server Installation Center** window appears, go to the [Complete the Install of SQL Server Express](#) section of this document.



**Complete  
the Install**

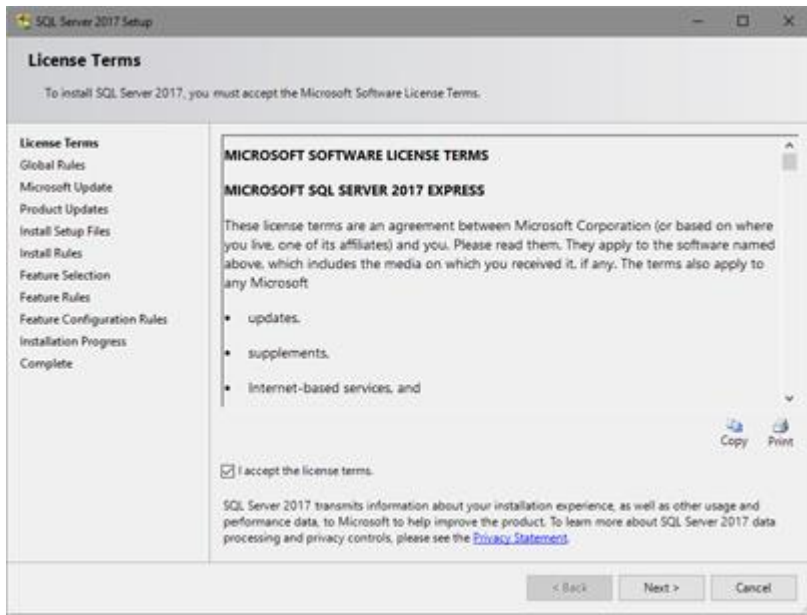
## COMPLETE THE INSTALL OF SQL SERVER EXPRESS

The steps in this section, for the most part, are the minimum steps that need to be taken in order for a **SQL Server Express** database to be configured for use by WinSPC. This means that some defaults that can safely be changed are not. You are welcome to change such defaults at your discretion.

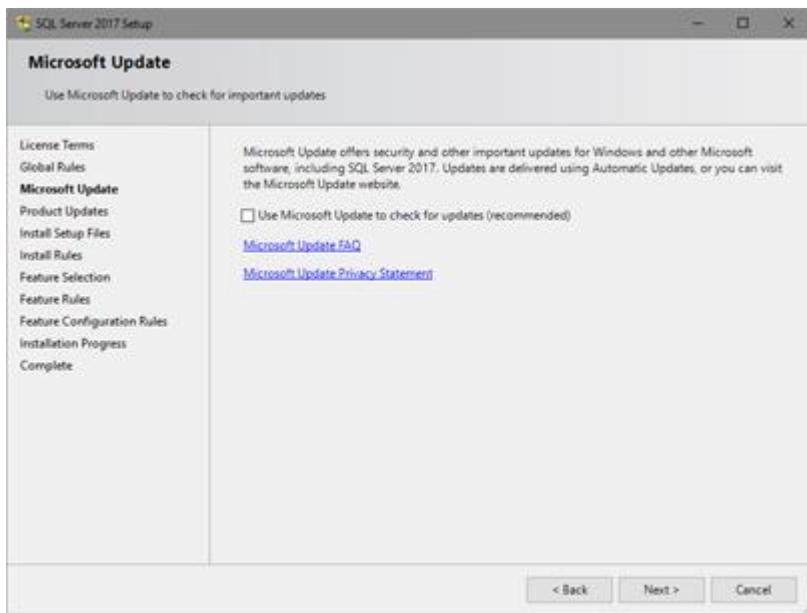
1. In the **SQL Server Installation Center** window, click **New SQL Server stand-alone installation or add features to an existing installation**. (For **SQL Server 2008 Express R2 SPC – Express Edition**, click **New Installation or add features to an existing installation**.)



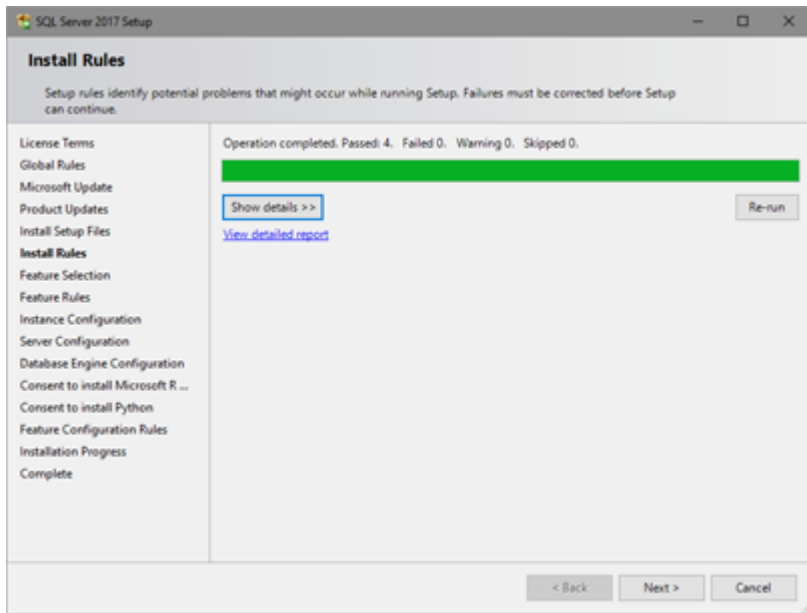
2. On the **License Terms** prompt, check the **I accept the license terms** check box and click **Next**.



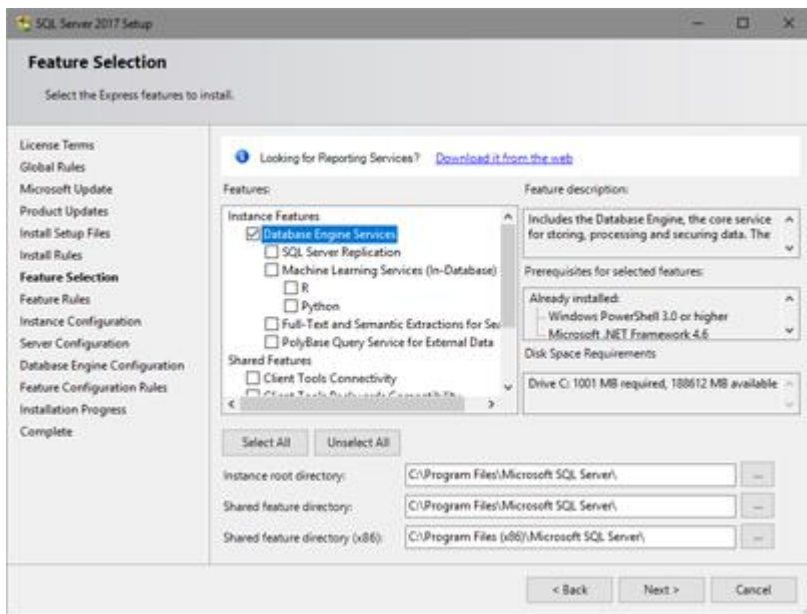
3. On the **Microsoft Update** prompt, click **Next**.



4. Allow the **Install Setup Files** prompt to complete and click **Next**.

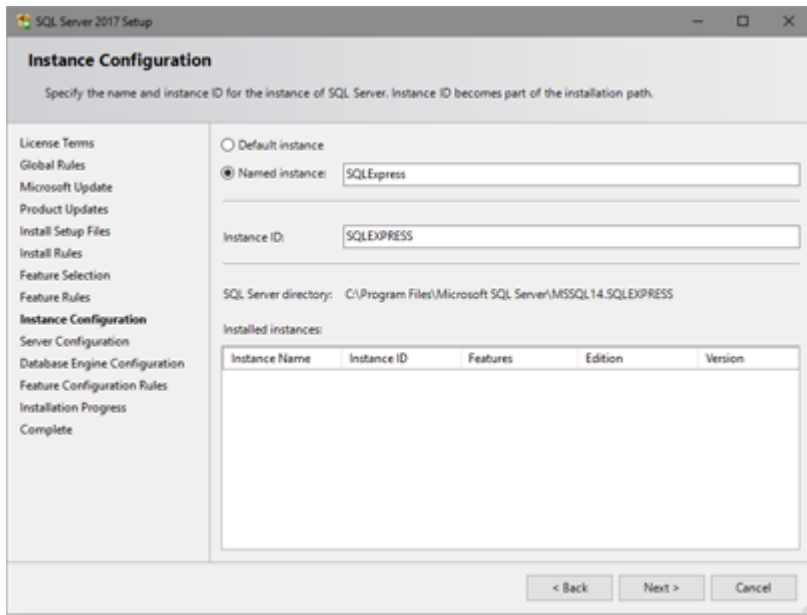


5. On the **Feature Selection** prompt, ensure the **Database Engine Services** check box is checked and, if you downloaded one of the last three editions listed in [step 1](#) of the [Download the Installation Files](#) section, also ensure the **Management Tools – Basic** (2012) check box is checked. Then, click **Next**.

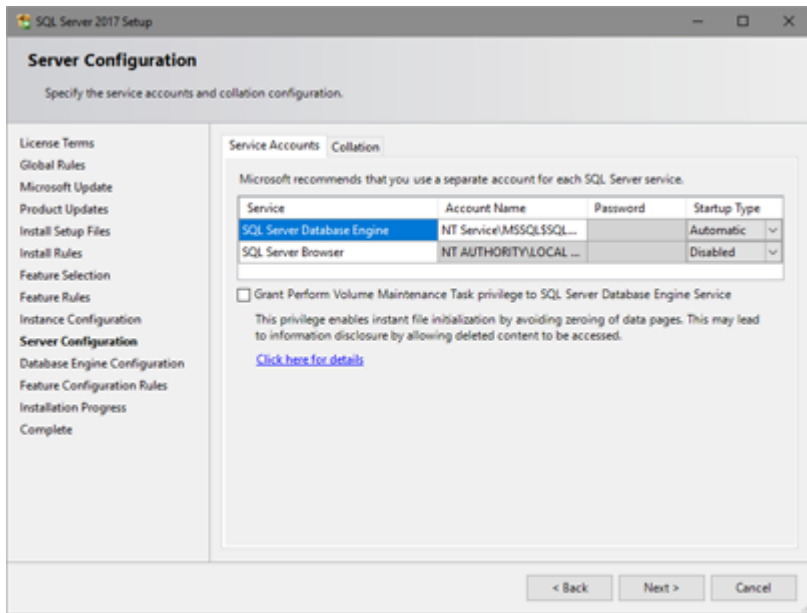


The above screenshot is from the installer for **SQL Server 2017 Express**, as are all the screenshots in this document. It does not show a **Management Tools – Basic** check box. This is because the installation of the necessary management tools is, for **SQL Server 2017 Express**, dealt with by a separate installer, one discussed in [step 2](#) of the [Download the Installation Files](#) section. The same applies to **SQL Server 2016 Service Pack 2 Express**. This is a change from the earlier editions of **SQL Server Express**, which include a **Management Tools – Basic** check box on this **Feature Selection** prompt.

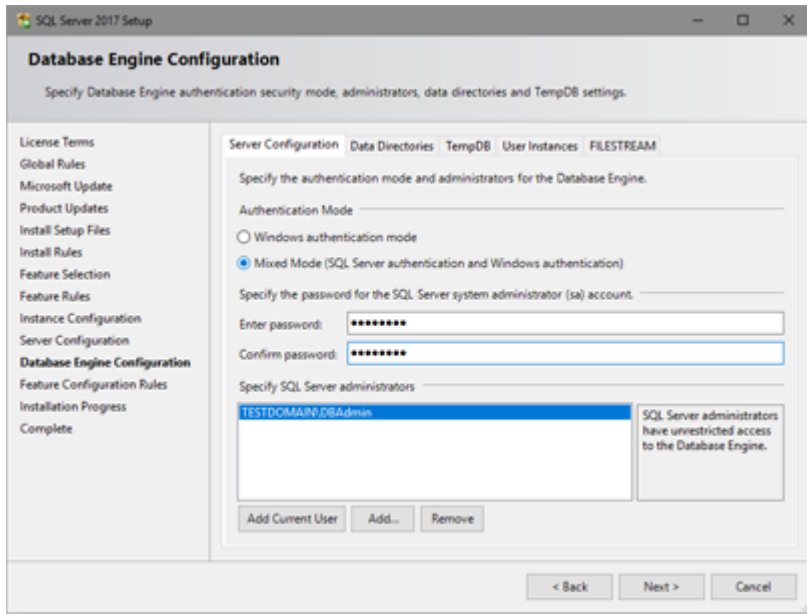
- On the **Instance Configuration** prompt, click **Next**.



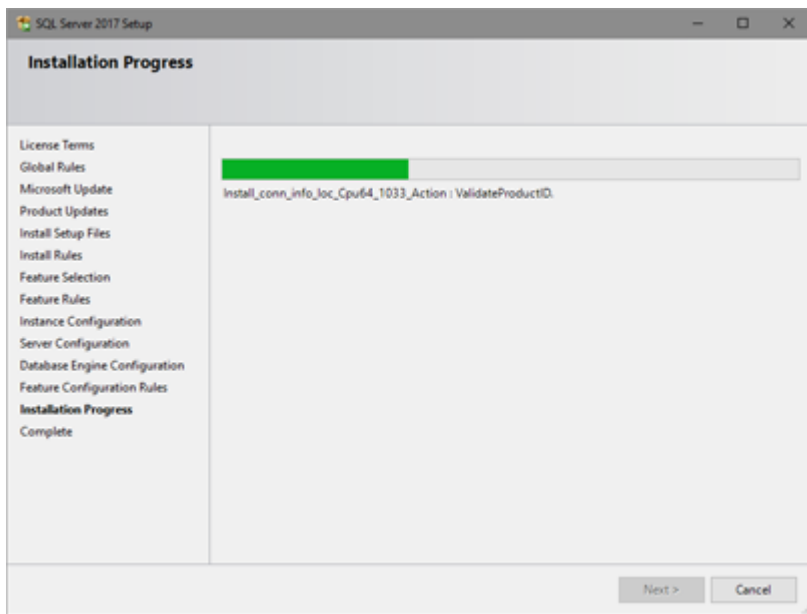
- On the **Server Configuration** prompt, click **Next**.



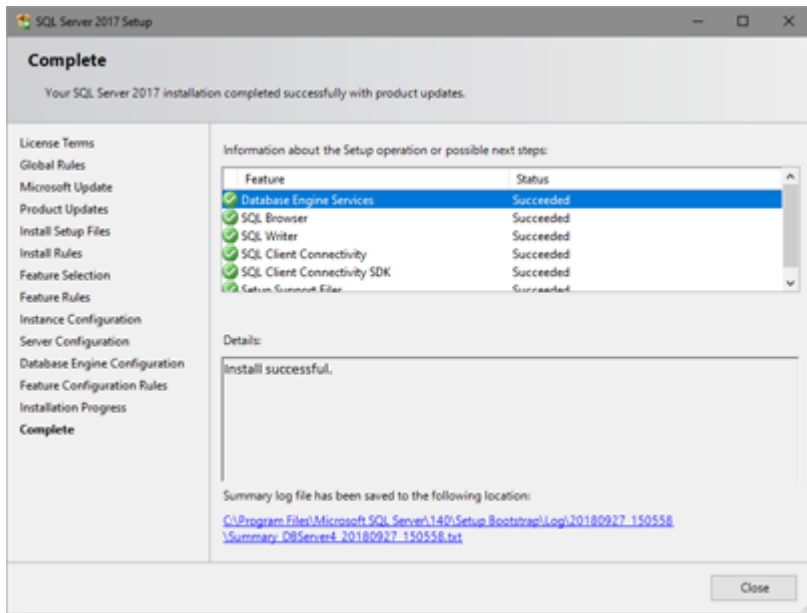
- On the **Database Engine Configuration** prompt, select **Mixed Mode (SQL Server authentication and Windows authentication)** and, at **Enter password** and **Confirm password**, supply a password for the built-in SQL Server administrator (sa) account. Then, click **Next**. (WinSPC requires **Mixed Mode** authentication. It will not work if **Windows authentication mode** is selected.)



- Allow the **Installation Progress** prompt to complete.



10. When the **Complete** prompt appears, click **Close**.



11. Close the **SQL Server Installation Center** window.



12. If you installed one of the first two editions listed in [step 1](#) of the [Download the Installation Files](#) section, complete the [Install SQL Server Management Studio](#) section of this document. If you installed one of the last three editions, your installation of **SQL Server Express** is now complete and ready to be configured for use by WinSPC, the steps for which are detailed in **Chapter 1: Microsoft SQL Server** in the **WinSPC Installation and Configuration Guide** (a document that is included in the materials that ship with WinSPC).

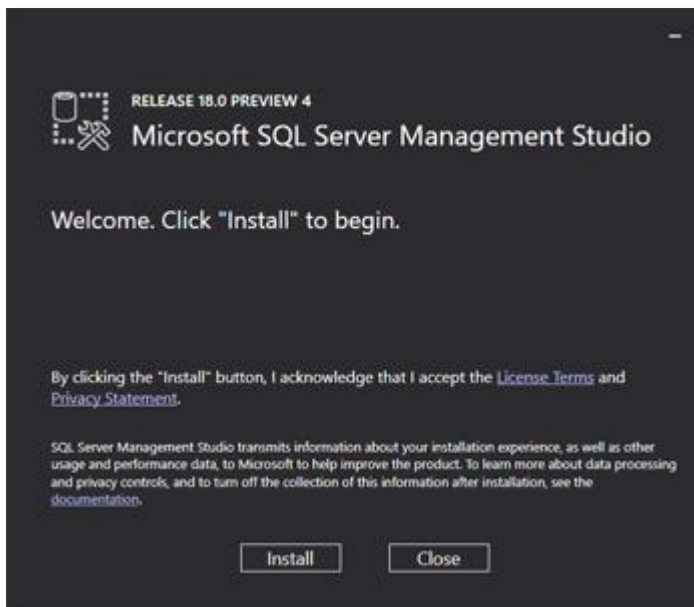


**Install  
SSMS**

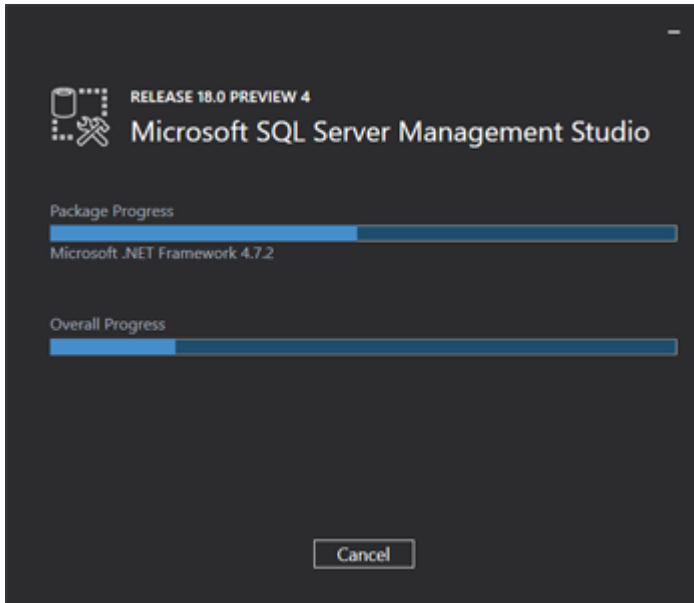
## INSTALL SQL SERVER MANAGEMENT STUDIO

This section only needs to be completed if, in this document's preceding sections, you downloaded and installed *SQL Server 2017 Express* or *SQL Server 2016 Service Pack 2 Express*.

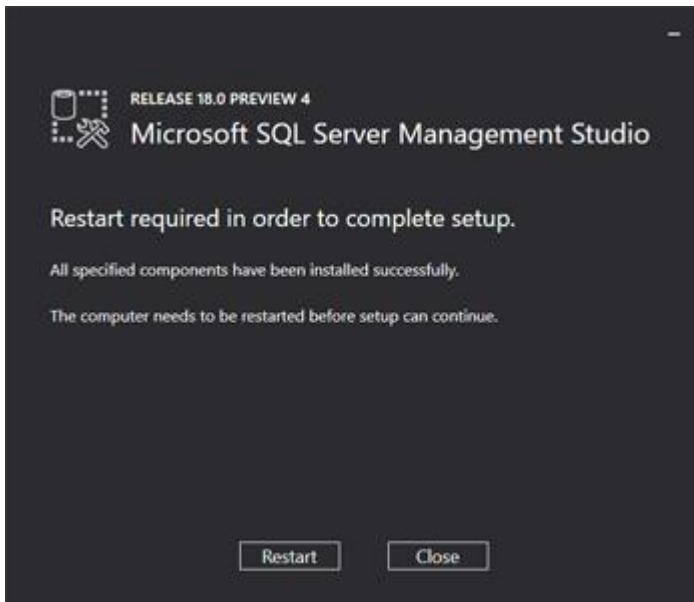
1. Double-click the *SSMS-Setup-ENU.exe* file you downloaded in [step 2](#) of this document's [Download the Installation Files](#) section and, on the prompt that appears, click **Install**.



2. Allow the installation to complete.



3. When prompted, restart the computer.



4. Configure your installation of **SQL Server Express** for use with WinSPC by completing **Chapter 1: Microsoft SQL Server** of the **WinSPC Installation and Configuration Guide** (which, as stated earlier, is included with your WinSPC materials).