

MICROSOFT TERMINAL SERVICES DEPLOYMENT

In addition to a traditional client-server deployment, WinSPC[®] is optimized for deployment using Microsoft[®] Terminal Services[®].

A Terminal Services deployment allows IT departments to deploy WinSPC across multiple facilities by installing it only once on a terminal server. Using remote desktop software, any licensed user can launch an instance of WinSPC so long as they have appropriate permissions, credentials and client access to the terminal server.

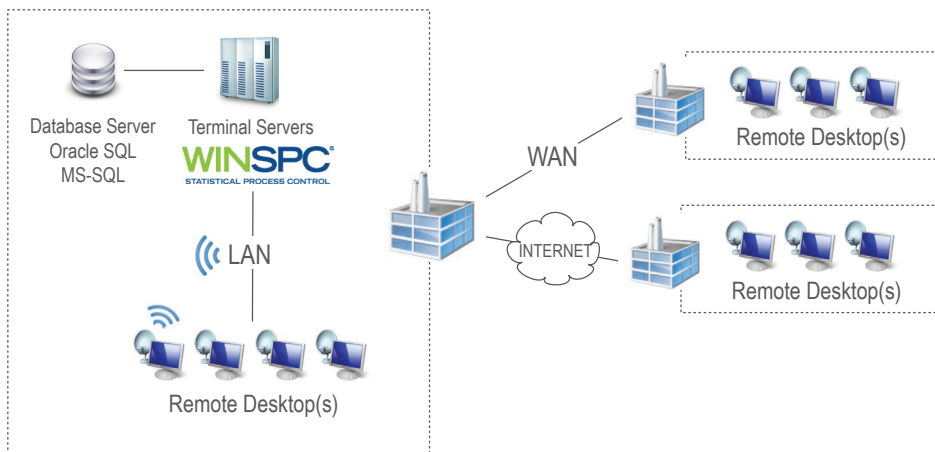
Centralization makes upgrading, troubleshooting, and administering WinSPC much easier. Terminal Services has the additional benefit of natively integrating with Windows Active Directory authentication and policies to provide access control over applications or data.

Benefits

- Reduce IT support and system administration time
- Centralize system and application data
- Deploy faster and more cost-effectively across a WAN
- Minimize time and resources needed for upgrades, maintenance and end-user support
- Standardize, measure and improve client performance
- Lower hardware, licensing and energy costs
- Reduce implementation time

Configurations

WinSPC can be deployed over a corporate LAN, WAN, or an internet (with or without VPN) configuration. This provides a cost-effective method for implementing WinSPC as an enterprise standard across geographically dispersed facilities. It is especially suitable for organizations that are consolidating or centralizing their information systems within a dedicated facility, such as a high availability data center.



Definitions

THIN CLIENT

A thin-client is a client that depends on the server for remote application execution in addition to interaction with other server resources, such as the WinSPC data-base server. A thin client primarily captures data entry information for the remote server while displaying a copy of the user interface to an operator. Common thin-client platforms include dedicated terminal appliances, web browsers or remote desktop software.

TERMINAL SERVICES

Microsoft Terminal Services for Windows is the method by which WinSPC is deployed and operated to achieve a thin-client architecture. Terminal Services is a component available for Microsoft Windows servers that allows a user to execute applications on a remote computer over any type of Windows supported network.

Terminal Services is commonly deployed across a Local Area Network (LAN), Wide Area Network (WAN) or Virtual Private Network (VPN) over internet scenarios.

Minimum Requirements

Memory & Hard Disk Requirements

Within a Terminal Services deployment every user session is allocated a portion of memory, while all users share the same installation. For this reason, a computer configured as the terminal server requires a significant amount of memory. Even though users are accessing the terminal server over the network, performance is not as dependent on the quality and speed of your network as in a client-server installation. The connection speed to the database server is the most important network performance constraint.

Terminal Services Server requirements

When deploying a Microsoft Terminal Services solution, the primary limiting factor is RAM. At least 25MB of RAM are consumed by each remote desktop launch of WinSPC. If a Microsoft Terminal Services server has 2GB of available RAM it could potentially host 80 simultaneous user sessions. To host more simultaneous sessions, increase the amount of RAM.

Supported Versions

Terminal Services is supported on WinSPC Version 7.2 and higher. DataNet certifies WinSPC for a Terminal Services deployment using the hardware and software requirements described in this document. For complete specifications please see the WinSPC Installation and Configuration Guide, which is available by contacting your DataNet sales consultant.

TERMINAL SERVICES SERVER

Server class processor (800MHz)

Windows 2003 Server (Service Pack 1 or above)

Microsoft Terminal Services

1 GB available RAM plus an additional 25MB RAM per Remote Desktop

1 CPU core per 10 sessions

200MB available local hard disk space (beyond operating system recommended space) plus an additional 5MB per client

VGA monitor and video adapter

Keyboard

Mouse or other pointing device

CD-ROM or DVD-ROM drive

REMOTE DESKTOP

PC with Pentium® II class processor - 500MHz

Windows XP Pro or Windows 2000 operating system

Windows Remote Desktop Client

64MB available RAM

100MB available local hard disk space (beyond operating system recommended space)

VGA monitor and video adapter

Keyboard

Mouse or other pointing device

DATABASE SERVER

Server class processor – 800MHz

512MB available RAM

10GB available local hard disk space (beyond operating system recommended space)

VGA monitor and video adapter

Keyboard

Mouse or other pointing device

CD-ROM or DVD-ROM drive

